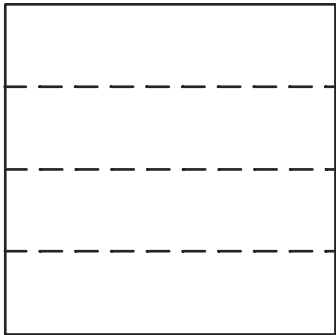


The Pig Base has the free flaps in the center.

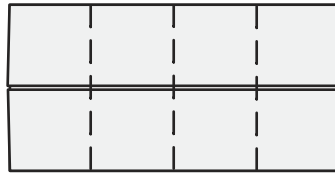
The Windmill (aka Boat or Pinwheel Base) has the free flaps at the edges.

Diagrammed by Mari Michaelis ©2013

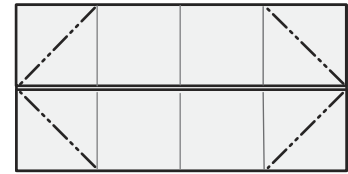
Pig Base



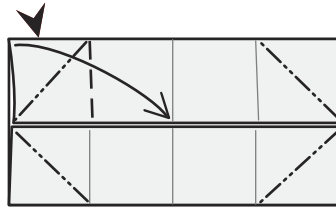
1. Begin with a cupboard fold.



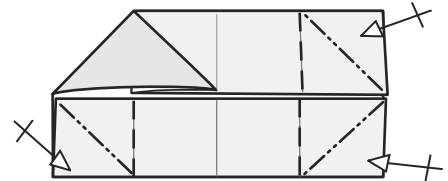
2. Valley fold & unfold.



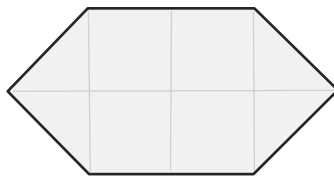
3. Pre-crease for Squash folding the corners.



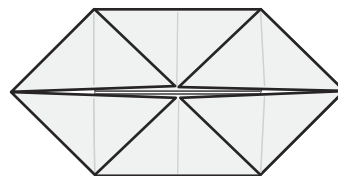
4. Lift up the corner of the flap and squash fold down to the right.



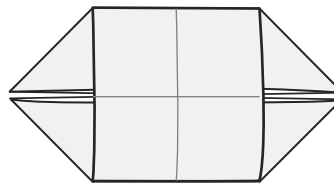
5. Repeat on the other 3 corners.



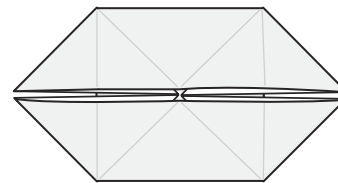
Pig Base Back View



6. Completed Pig Base.

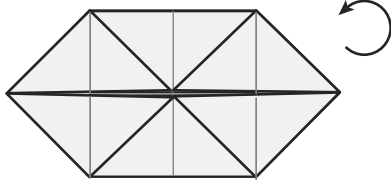


Windmill Base Back View

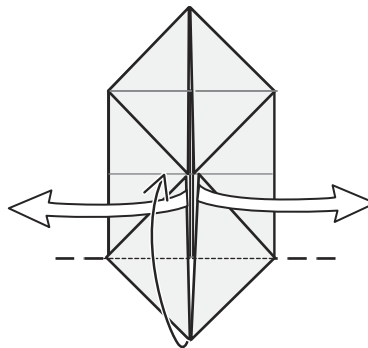


4. Completed Windmill Base.

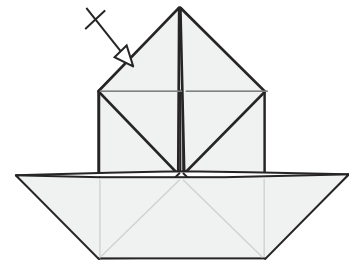
Windmill or Boat Base



1. Begin with a Pig Base. Rotate.



2. Pull the loose flaps out to the side allowing the bottom edge to lift straight up. Then Valley fold up on the existing horizontal crease. Squash.



3. Repeat at the top.